

MONTHLY MEMBERSHIP PROGRESS REPORT

District 26 M5

Results as of: 6/30/2020

GMT:

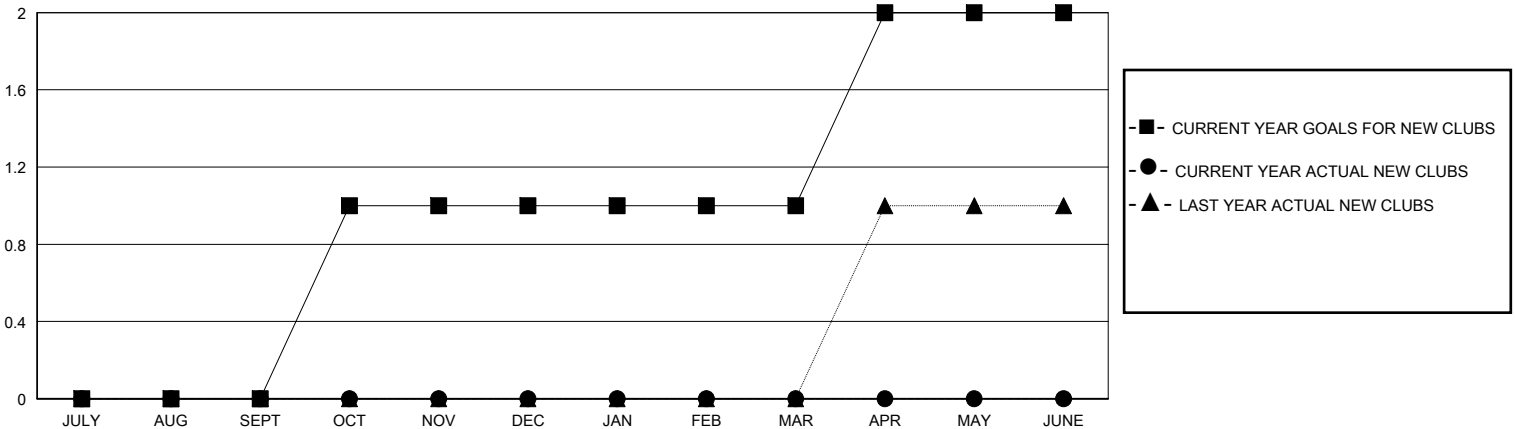
LOCATION MISSOURI

GMT CA

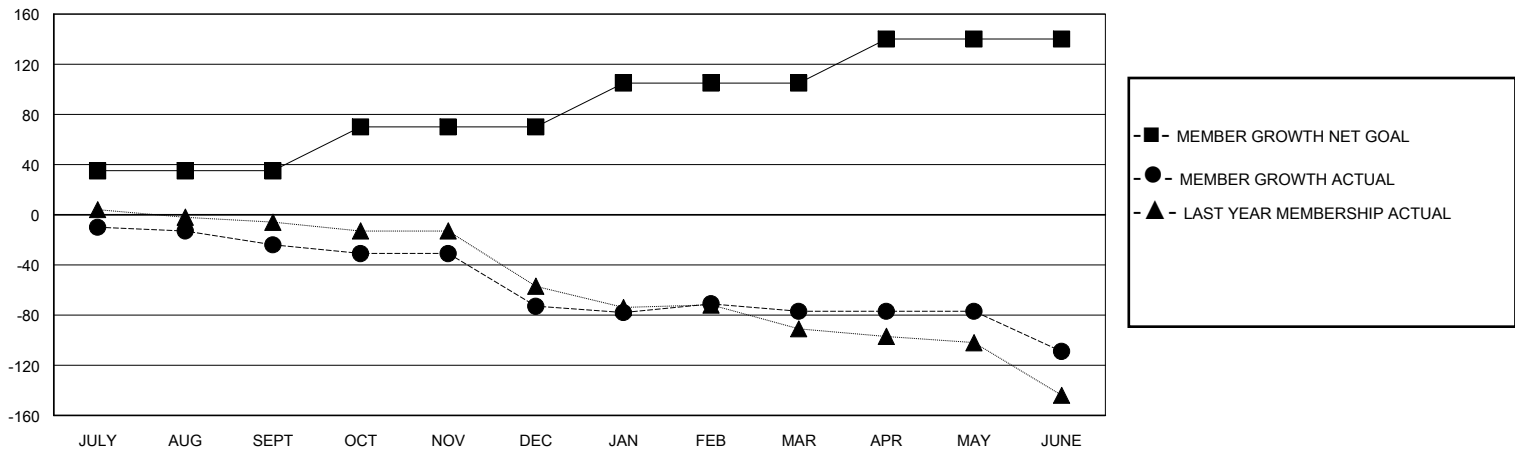
Clubs			
RESULTS FOR 2019-2020			
QUARTER	NEW CLUB GOAL	NEW CLUBS	DROPPED CLUBS
JULY/AUG/SEPT	0	0	0
OCT/NOV/DEC	1	0	3
JAN/FEB/MAR	0	0	0
APR/MAY/JUNE	1	0	0

Members			
RESULTS FOR 2019-2020			
QUARTER	MEMBER GROWTH NET GOAL	MEMBER GROWTH ACTUAL	DROPPED MEMBERS ACTUAL (including transfers)
JULY/AUG/SEPT	35	24	45
OCT/NOV/DEC	35	9	57
JAN/FEB/MAR	35	18	21
APR/MAY/JUNE	35	7	39

GOALS AND ACTUAL NEW CLUBS CUMULATIVE



GOALS AND ACTUAL MEMBERS CUMULATIVE



DROPPED CLUBS: 3	26 CLUBS OF 51 ADDED 1 OR MORE NEW MEMBERS	GENDER DISTRIBUTION	
		MALE 710 (67.11%)	FEMALE 348 (32.89%)
DROPPED MEMBERS		TOTAL FAMILY UNIT MEMBERS 229	
DECEASED 11	CLUB CANCELLED 30		
OTHER 121	CLICK HERE FOR CUMULATIVE MEMBERSHIP DATA		
TOTAL 162			